

15

Moth-ers al - ways sing you their song. Moth-ers al - ways

This system contains measures 15 through 20. The vocal line starts with a whole rest in measure 15, followed by the lyrics "Moth-ers al - ways sing you their song." in measures 16-17, and "Moth-ers al - ways" in measures 18-20. The piano accompaniment features a steady eighth-note bass line and a treble line with chords and eighth-note patterns.

21

wrap you in silk. Moth-ers al - ways hold you too long

This system contains measures 21 through 26. The vocal line has the lyrics "wrap you in silk." in measures 21-22, a whole rest in measure 23, and "Moth-ers al - ways hold you too long" in measures 24-26. The piano accompaniment continues with the same rhythmic patterns as the previous system.

27

Moth-ers al - ways

*Start*

This system contains measures 27 through 32. The vocal line has a whole rest in measure 27, followed by "Moth-ers al - ways" in measures 28-32. A handwritten bracket labeled "Start" spans from measure 28 to the end of the system. The piano accompaniment remains consistent.

33

need you too much. Moth-ers al ways teach you what's right.

This system contains measures 33 through 38. The vocal line has the lyrics "need you too much." in measures 33-34, a whole rest in measure 35, and "Moth-ers al ways teach you what's right." in measures 36-38. The piano accompaniment continues with the same rhythmic patterns.

I Love You

39



Moth-ers al - ways count on your touch. Moth-ers are a



45



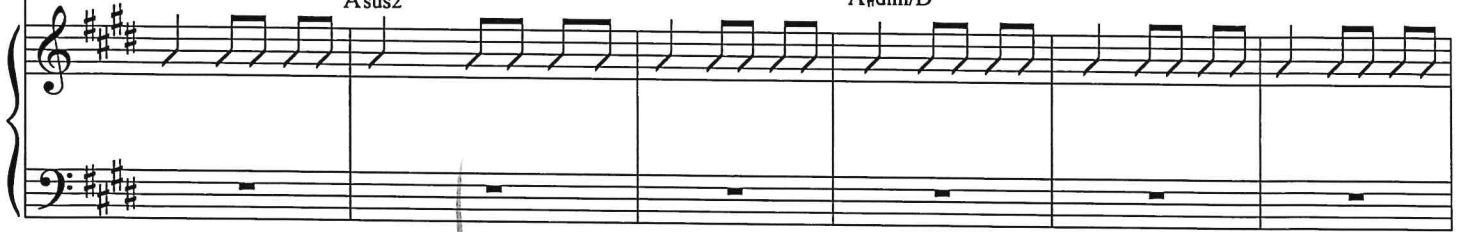
pa - ra - site *f* Would you want your hus-band dead? You ans - wer with your

*Asus2* *A#dim/D*



ac - tion. A hun - gry heart must be fed? Or just a - noth - er dis - trac -

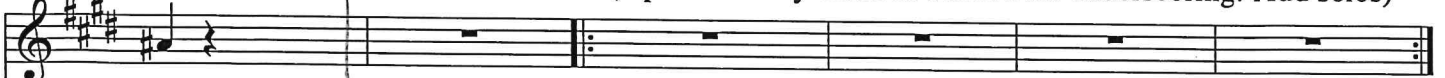
*Asus2* *A#dim/D*



end

57

(repeat as many times as needed for underscoring. Add solos)



tion?

